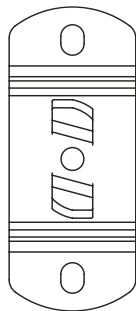
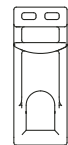


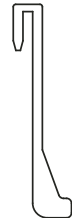
x 3



x 10



x 32



x 2



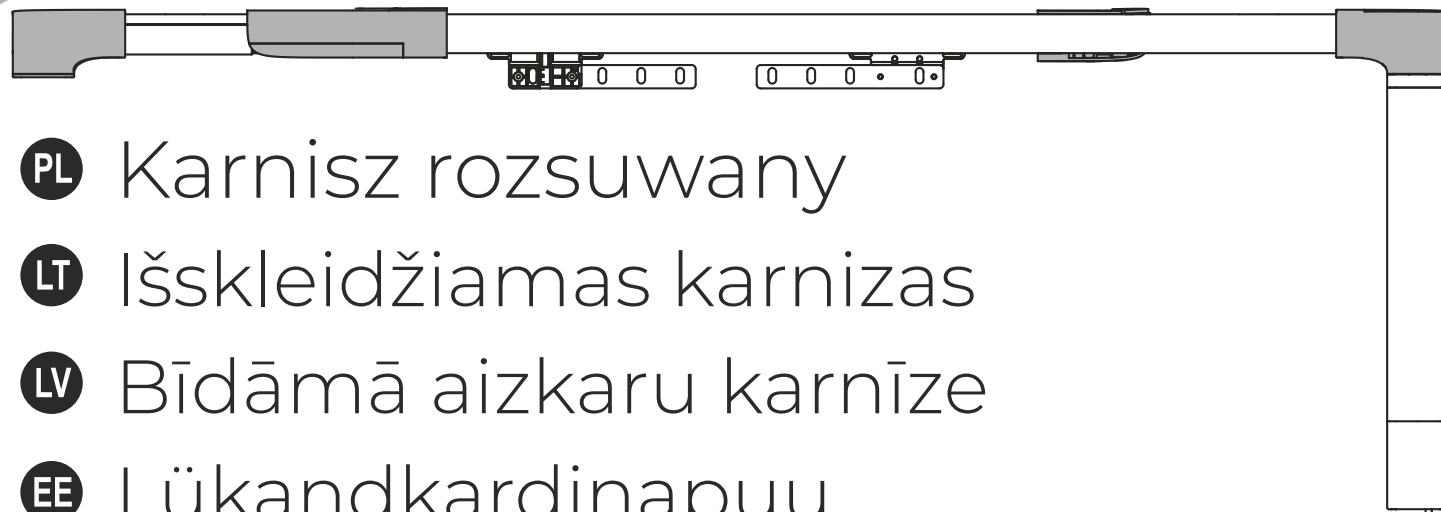
x 6



x 26



x 26

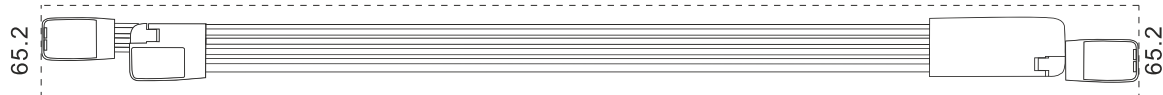


PL Karnisz rozsuwany

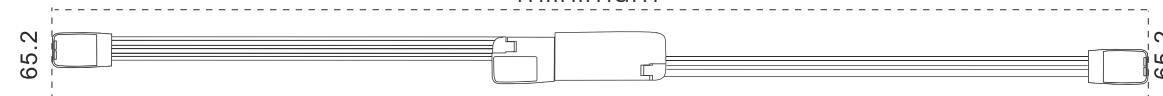
LT Išskleidžiamas karnizas

LV Bīdāmā aizkaru karnīze

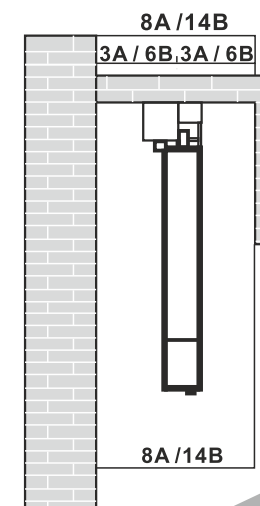
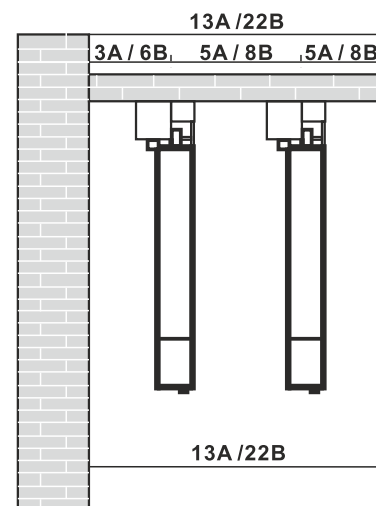
EE Lükandkardinapuu



minimum
minimaliai
minimālais
miinimum



maksimum
maksimaliai
maksimālais
maksimum

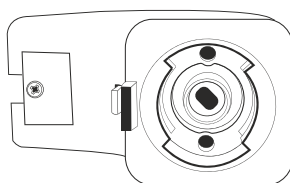
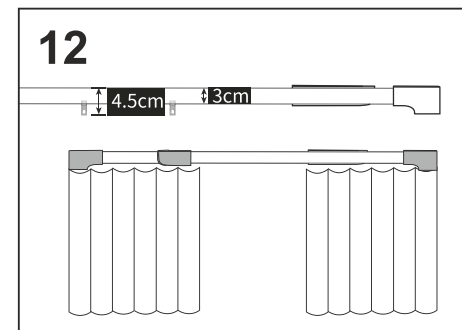
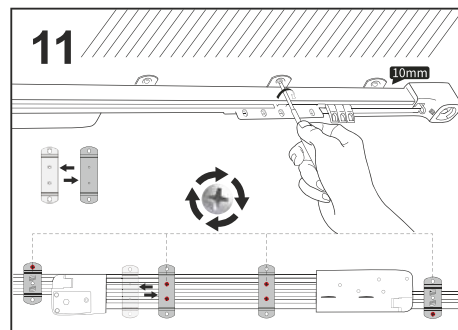
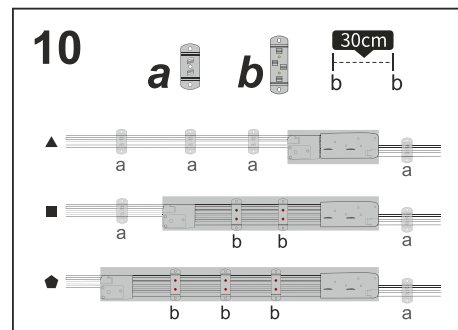
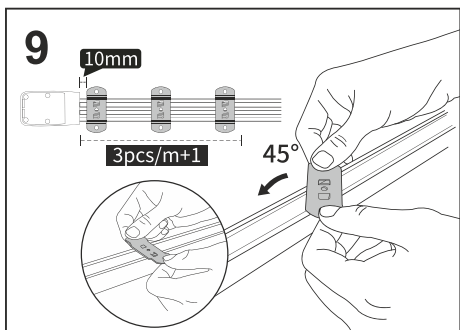
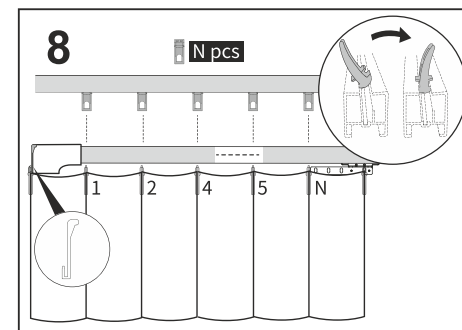
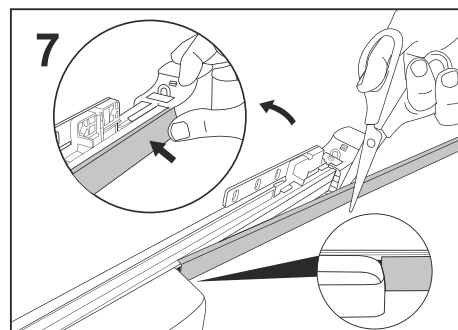
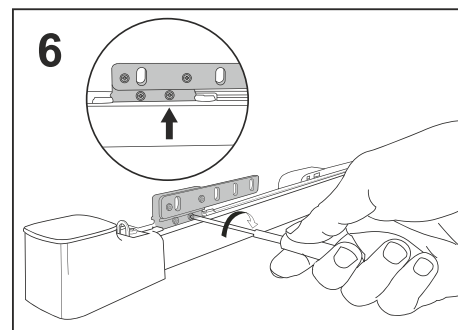
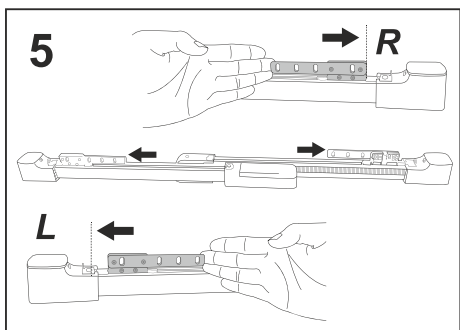
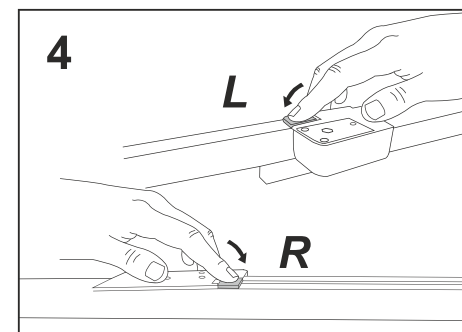
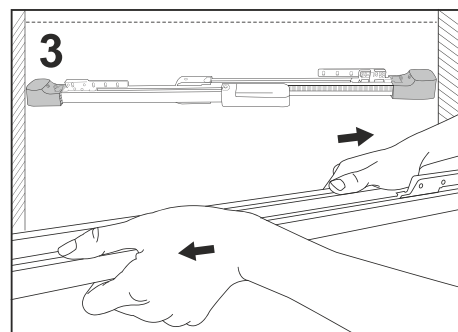
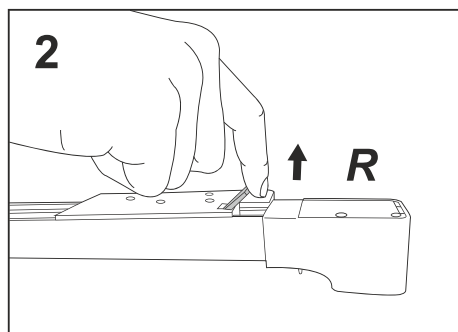
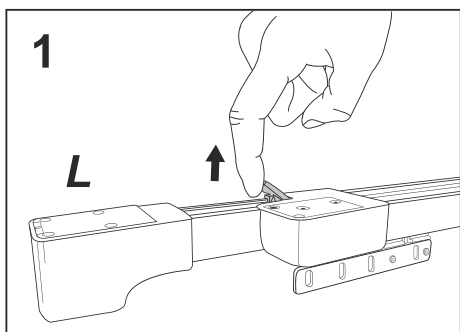


PL Instrukcja montażu
 LT Montavimo instrukcija
 LV Montāžas instrukcija
 EE Paigaldusjuhend

Dopuszczalne obciążenie
 Leistina apkrova
 Noslogojuma ierobežojums
 Lubatud koormus

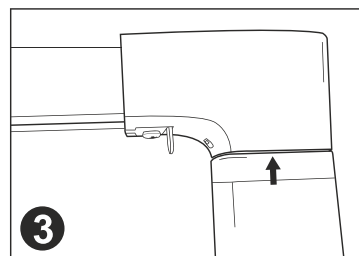
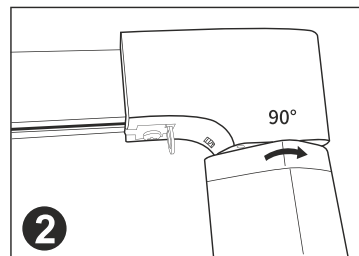
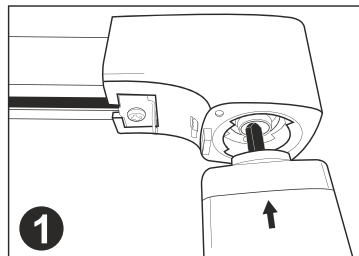
Maksymalne obciążenie wynosi:
 Maksimali apkrova siekia:
 Maksimāls noslogojums ir:
 Maksimaalne koormus on:

20 kg



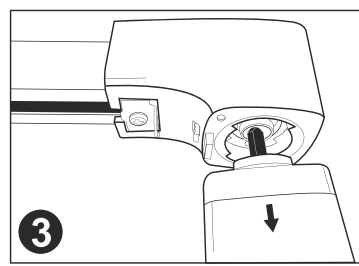
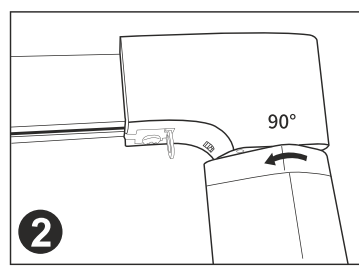
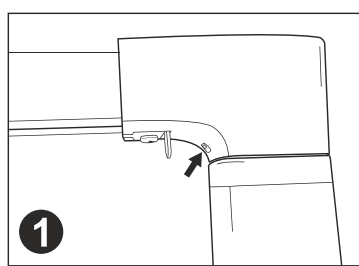
Element toru
 Bēglio elementas
 Slides elements
 Rōopaelement

Montāž silnika
 Variklio montavimas
 Motora montāža
 Mootori paigaldus



Element silnika
 Variklio elementas
 Motora elements
 Mootorikomponent

Demontāž silnika
 Variklio demontavimas
 Motora demontāža
 Mootori mahavōtmine



Ustawienie limitów
 Ribų nustatymas
 Limitu uzstādīšana
 Piirangute seadmine

⚠ Po dostosowaniu rozmiaru szyny do rozmiaru okna należy ponownie ustawić limit Bēglio matmenis pritaikē prie lango matmenų, privalote dar kartą nustatyti ribą Pēc sliedes izmēra pielāgošanas loga izmēram atkal jāiestata limits Pārast siini suuruse kohandamist akna suurusega tuleb piirangt ueesti seada

